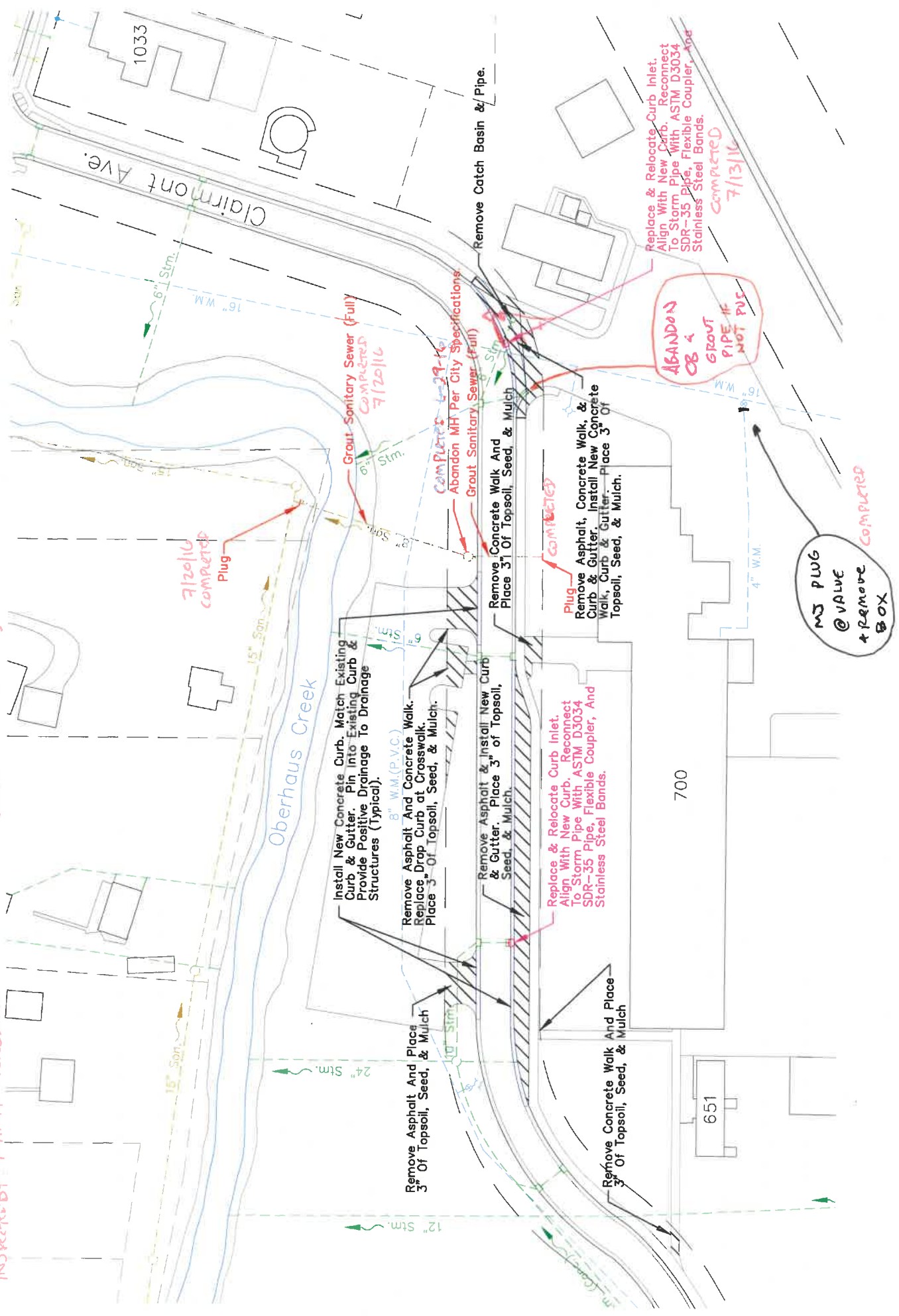


2016  
DENEEN RUSSELL JAMES DEMOLITION  
INSPECTED BY EMILY CROSSLAND

700 CLAIRMONT  
DEMOLITION & SEWER WORK  
(WEST ELEMENTARY)

7



# M&R REDI-MIX, INC.

READY MIXED CONCRETE • AGGREGATE  
SUPPLIES • CUSTOM TRUCKING  
(800) 786-6325

521 Commercial Street  
Pettisville, OH 43553  
PH: (419) 445-7771

5601 Cherry Street  
Stony Ridge, OH 43463  
PH: (800) 786-6325

L-207 Rd. 1-C  
McClure, OH 43534  
PH: (419) 748-8442

## MAILING ADDRESS

BOX 53038  
PETTISVILLE, OHIO 43553

### CAUTION

May cause eye or skin injury. Contains Portland cement. Freshly mixed cement, mortar, concrete, or grout may cause skin injury.

#### TAKE THESE PRECAUTIONS:

1. Avoid all contact with eyes.
2. Wear rubber boots and gloves, and avoid prolonged contact directly with skin or through porous materials.
3. In case of contact with skin or eyes. FLUSH THOROUGHLY WITH WATER.
4. If irritation persists, get medical attention promptly.
5. Keep children away.

### TERMS AND CONDITIONS

This load of concrete is produced in accordance with the A.S.T.M. standard specifications for Redi-Mix concrete.

We do not guarantee finished results obtained from this load of concrete, as many important factors affecting the ultimate quality of the completed job are out of our control.

Excessive water in concrete reduces its final strength. Any water added to the mix on the job will be at the purchaser's risk.

Ready Mix concrete is not returnable for credit.

In the event of delivery beyond curb line, this company will not assume liability for damage to curbs, sidewalks, driveways or other personal property.

Estimated delivery schedules will be maintained to the best of our ability. We will not consider any claims for damages for failure to do so.

Customer will be allowed 6 minutes per yard unloading time. Overtime price will apply to any additional time.

Water added:

Gallons

Customer's representative

LEAVE PLANT	ARRIVE JOB	START POUR
FINISH POUR	LEAVE JOB	ARRIVE PLANT

CUSTOMER ID	P.O. NUMBER	ZONE	JOB NUMBER	TIME	DATE	TICKET	
MISC01				11:00 AM	29-Jun-16	65610	
CHARGE RUSS JAMES			NAPOLIEN--700 CLAYMONT AVE OLD WEST SCHOOL				
QUANTITY THIS LOAD	QUANTITY ORDERED	QUANTITY DELIVERED	PRODUCT CODE	PRODUCT DESCRIPTION	UNIT OF MEASURE	UNIT PRICE	EXTENDED PRICE
1.75	1.50	1.75	59L9M450F	FLOWABLE PIPE FILL W/SH#	yd	\$99.00	\$173.25
1.00	1.00	1.00		DELIVERY CHARGE	ea	\$100.00	\$100.00
1.00	1.00	1.00		Delivery CHARGE	ea	\$100.00	\$100.00
TRUCK	PLANT	SLUMP	DUE AT JOB	USE OF CONCRETE	SUB-TOTAL		
MERLE	PVILLES	5.00			TAX		
						TOTAL	\$373.25
DELIVERY INSTRUCTIONS							\$27.06
SPECIAL INSTRUCTIONS							400.31
							\$400.31

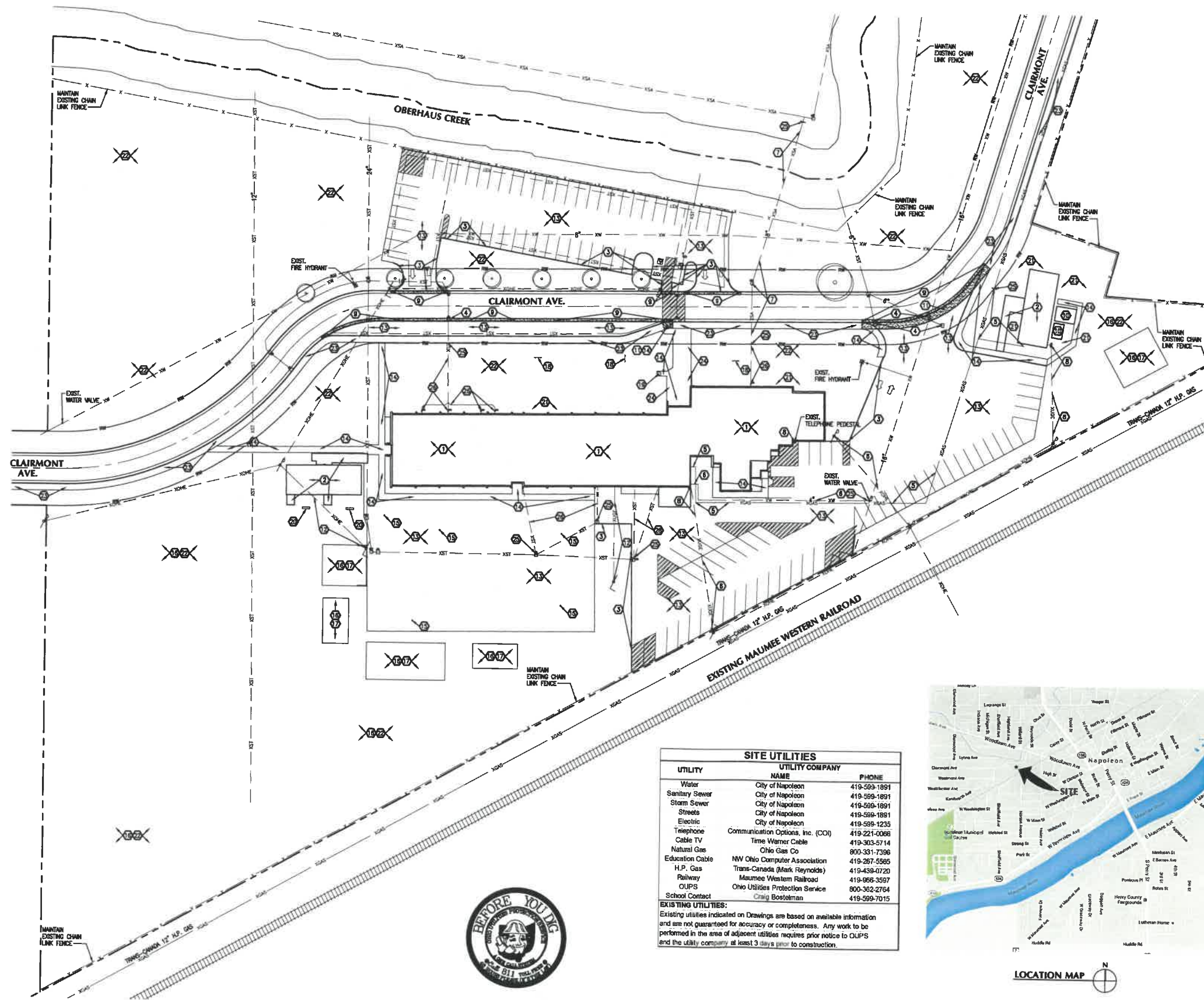
TEAR HERE

Truck	Driver	User	Disp	Ticket Num	Ticket ID	Time	Date
72	MERLE	Jarr		65610		11:00	6/29/16
Load Size	Mix Code	Returned	Qty	Mix Age	Seq	Load ID	
1.75 yd	59L9M450F				D	72284	
Material	Design Qty	Required	Batched	% Var	Moisture	Actual Wat	
2NS-HSE	2400 lb	4336 lb	4318 lb	-0.60%	3.14% M	16 gl	
LAF-TYP1	25 lb	44 lb	45 lb	2.86%			
DRIVER CASH	425 lb	744 lb	730 lb	-1.85%			
Water #1	27.0 gl	27.4 gl	27.0 gl	-1.58%		27.0 gl	
Actual	Num Batches: 1						
Load Total: 5310 lb Design W/C: 0.501 Water/Cement: 0.509 T Design Water: 97.3 gl Actual Water: 43.2 gl To Add: 4.0 gl							
Slump: 5.00 in @ Adjust Water: 0.0 gl/ Load Trim Water: -2.0 gl/ yd							



**INDEX OF DRAWINGS**

- C-1 SITE PLAN
- A-1 FLOOR PLAN
- A-2 ELEVATIONS AND SECTIONS



SITE UTILITIES		
UTILITY	UTILITY COMPANY	PHONE
Water	City of Napoleon	419-593-1891
Sanitary Sewer	City of Napoleon	419-599-1891
Storm Sewer	City of Napoleon	419-599-1891
Streets	City of Napoleon	419-599-1891
Electric	City of Napoleon	419-599-1891
Telephone	Communication Options, Inc. (COI)	419-599-1235
Cable TV	Time Warner Cable	419-221-0066
Natural Gas	Ohio Gas Co	419-303-5714
Education Cable	NW Ohio Computer Association	800-331-7396
H.P. Gas	Trans-Canada (Mark Reynolds)	419-267-5565
Railway	Maumee Western Railroad	419-866-3557
OUPS	Ohio Utilities Protection Service	800-362-2764
School Contact	Craig Bostelman	419-599-7015

**EXISTING UTILITIES:**  
Existing utilities indicated on Drawings are based on available information and are not guaranteed for accuracy or completeness. Any work to be performed in the area of adjacent utilities requires prior notice to OUPS and the utility company at least 3 days prior to construction.



**GENERAL DEMOLITION NOTES**

1. ASBESTOS WILL BE ABATED BY OTHERS UNDER SEPARATE CONTRACT PRIOR TO GENERAL DEMOLITION.
2. THE DEMOLITION CONTRACTOR SHALL BE RESPONSIBLE FOR THE PROTECTION OF SURROUNDING, ADJACENT OR ATTACHED STRUCTURES AND PROPERTY DURING DEMOLITION. STORM RUNOFF CONTAINING SEDIMENT SHALL BE CONTROLLED ON SITE. SILT SHALL NOT BE ALLOWED TO LEAVE SITE. PROTECT CURB INLETS AND CATCH BASINS. PROVIDE TEMPORARY EROSION AND SEDIMENTATION CONTROL, AS SPECIFIED AND IN ACCORDANCE WITH ODOT SS 832.
3. THE DEMOLITION CONTRACTOR SHALL FIELD VERIFY ALL EXISTING CONDITIONS AND UTILITY LOCATIONS PRIOR TO SUBMITTING BID.
4. OWNER SHALL RETAIN RIGHTS OF OWNERSHIP FOR SALVAGEABLE MATERIALS AND EQUIPMENT WHEN NOTED. MATERIALS AND BUILDINGS TO BE SALVAGED TO OWNER SHALL BE DELIVERED BY CONTRACTOR AS DIRECTED TO A LOCATION WITHIN A THREE MILE RADIUS. CONTRACTOR SHALL COORDINATE SALVAGE REQUESTS WITH OWNER AND DISPOSE OF OTHER MATERIAL NOT SALVAGED.
5. AFTER REMOVING FLOOR SLABS, SUBGRADE PILING AND DRAINAGE, AND FOUNDATION FOOTINGS, BACKFILL ALL EXCAVATIONS WITH EARTH PLACED IN 6" THICK COMPACTED LIFTS WITH THE UPPER 4" BEING TOP SOIL. AREAS OUTSIDE THE BUILDING LINES SHALL BE FILLED IN A SIMILAR MANNER. GRADE, SEED AND MULCH ALL DISTURBED AREAS. DEBRIS AND MATERIALS FROM DEMOLISHED BUILDING SHALL NOT BE USED AS FILL IN ANY AREA ON SITE. ALL AREAS SHALL BE GRADED TO SURFACE DRAIN.
6. REPAIR/REPLACE EXISTING PUBLIC SIDEWALKS, CURB, PAVEMENTS, LAWNS AND OTHER SURFACE IMPROVEMENTS DAMAGED AS A RESULT OF DEMOLITION ACTIVITIES.
7. PROPERTY LINE LOCATIONS SHOWN ARE APPROXIMATE. DEMOLITION CONTRACTOR SHALL FURNISH A CERTIFIED LAND SURVEY TO OWNER BEFORE COMMENCING DEMOLITION WORK. SURVEY SHALL BE COMPLETED BY AN Ohio LICENSED PROFESSIONAL LAND SURVEYOR. DO NOT DISTURB SURVEY MARKERS. IF MARKERS ARE LOST DURING DEMOLITION, SURVEYOR SHALL RESET WITH COST BY CONTRACTOR.
8. GAS, WATER, SANITARY AND STORM LINES SHALL BE ABANDONED AT PROPERTY LINE AND CAPPED OFF UNDER THE DIRECTION AND SUPERVISION OF THE UTILITY OWNER. THIS WORK MUST BE COORDINATED WITH THE UTILITY OWNER. PROVIDE TWO COPIES OF AS-BUILT DRAWING TO OWNER WITH THREE TE DURING SHOW FOR EACH CAPPED UTILITY IN ADDITION TO DEPTH OF COVER AND UTILITY DESCRIPTION.

**DEMOLITION KEYNOTE LEGEND**

1. REMOVE BUILDING INCLUDING ALL BASEMENTS, WALLS, FOUNDATIONS, FOOTINGS, COLUMNS, PIERS, PAIS, FLOORS, RAMPS, SLABS AND UTILITIES WITHIN FOOTPRINT.
2. REMOVE MODULAR STRUCTURE, STEPS, RAMP AND FOUNDATION. REMOVE UTILITY SERVICES. COORDINATE WORK WITH UTILITY COMPANY.
3. REMOVE CONCRETE CURB & GUTTER OR CURB.
4. REMOVE AND RELOCATE CURB INLET, ALIGN WITH NEW CURB AND GUTTER. RECONNECT TO STORM PIPE PER CITY SPECIFICATIONS. COORDINATE WORK WITH CITY OF NAPOLEON.
5. REMOVE GAS METER AND CAP SERVICE AT PROPERTY LINE. REMOVE SERVICE LINES ON LOT. COORDINATE WORK WITH UTILITY COMPANY.
6. REMOVE WATER SERVICE LINE FROM METER TO MAIN LINE. COORDINATE DISCONNECTION FROM MAIN WITH CITY OF NAPOLEON.
7. REMOVE SANITARY SERVICE FROM SOUTH RIGHT OF WAY OF CLAIRMONT TO MAIN LINE (NORTH SIDE OF CREEK). GROUT SEWER FULL AND ABANDON MANHOLE PER CITY SPECIFICATIONS. COORDINATE WORK WITH CITY OF NAPOLEON.
8. REMOVE ELECTRIC, TELEPHONE, CABLE TV AND COMMUNICATION (MVOCA) SERVICES INCLUDING CONDUIT, CABLES AND ON-LOT SERVICE POLES. COORDINATE WORK WITH EACH UTILITY COMPANY.
9. REPLACE FULL HEIGHT CONCRETE CURB & GUTTER OR CURB, MATCH EXISTING. COORDINATE WORK WITH CITY AND PER CITY SPECIFICATIONS.
10. REMOVE YARD SHED
11. INSTALL SIDEWALK IN RIGHT OF WAY, MATCH EXISTING WIDTH AND DEPTH.
12. REMOVE LIGHT/SERVICE POLES, CABLES, FOUNDATION AND UNDERGROUND CONDUITS.
13. REMOVE ASPHALT CONCRETE PAVEMENT TO 12" BELOW FINAL GRADE. BACKFILL PER GENERAL NOTE #6.
14. REMOVE CONCRETE SLAB, SIDEWALK, RAMPS OR STEPS TO 12" BELOW FINAL GRADE. BACKFILL PER GENERAL NOTE #6.
15. REMOVE BASKETBALL POLE AND FOUNDATION. SALVAGE POLE AND GOAL TO OWNER.
16. REMOVE PLAYGROUND EQUIPMENT. REMOVE CONCRETE FOUNDATIONS. SALVAGE EQUIPMENT TO OWNER, UNLESS DIRECTED OTHERWISE BY SCHOOL DISTRICT. (FIELD VERIFY)
17. REMOVE WOODEN TIMBERS AT PERIMETER. REMOVE PLAYGROUND SURFACE MATERIAL.
18. REMOVE SIGN, POST AND FOUNDATION.
19. REMOVE FLAG POLE INCLUDING FOUNDATION. SALVAGE POLE TO OWNER.
20. REMOVE BENCH AND FOUNDATION.
21. REMOVE SHRUBS, BUSHES AND MULCH ADJACENT TO BUILDING.
22. ALL LAWNS AND TREES TO REMAIN, PROTECT AS REQUIRED.
23. EXISTING SIDEWALK TO REMAIN.
24. REMOVE BICYCLE RACKS. REMOVE CONCRETE FOUNDATIONS. SALVAGE EQUIPMENT TO OWNER, UNLESS DIRECTED OTHERWISE BY SCHOOL DISTRICT. (FIELD VERIFY)
25. CAP UTILITIES AT THIS LOCATION.
26. REMOVE STORM PIPE, SANITARY PIPE, AND CLEANOUTS.

**LEGEND**

- CB EXIST. CATCH BASIN
- EXIST. MANHOLE
- EXIST. ELECTRIC POLE W/ GUY
- EXIST. ELECTRIC POLE W/ TELEPHONE WIRE
- EXIST. LIGHT POLE
- EXIST. COMMUNICATIONS POLE
- ⊕ FIRE HYDRANT
- ⊕ WATER OR GAS VALVE
- EXIST. GAS METER
- PROPERTY LINE
- R/W LINE
- XUGCATV— EXISTING UNDERGROUND CABLE TELEVISION
- XOHCOM— EXISTING OVERHEAD COMMUNICATION (MVOCA'S)
- XOHE— EXISTING OVERHEAD ELECTRIC
- XUG— EXISTING UNDERGROUND ELECTRIC
- XGAS— EXISTING GAS LINE
- XSA— EXISTING SANITARY LINE
- XST— EXISTING STORM LINE
- XOHT— EXISTING OVERHEAD TELEPHONE
- XUGT— EXISTING UNDERGROUND TELEPHONE
- XW— EXISTING WATER LINE



PLOT SCALE  
1"=40'  
0 20' 40' 80'  
FOR SHEET SIZE 24"x36"

ISSUE DATE  
03-24-18 FOR BIDS

© 2018 BEILHARZ ARCHITECTS, INC.  
THE CONTENT OF THIS DRAWING IS NOT INTENDED TO BE GUARANTEED FOR USE OR RELIANCE BY ANY OTHER PARTY. CONTRACTORS, CONSULTANTS, ENGINEERS, ARCHITECTS, AND OTHER PROFESSIONALS SHALL BE RESPONSIBLE FOR VERIFYING THE ACCURACY OF THE INFORMATION PROVIDED HEREON. THE USER SHALL BE RESPONSIBLE FOR OBTAINING ALL NECESSARY PERMITS AND APPROVALS FROM THE APPLICABLE AGENCIES AND AUTHORITIES. THE USER SHALL BE RESPONSIBLE FOR OBTAINING ALL NECESSARY PERMITS AND APPROVALS FROM THE APPLICABLE AGENCIES AND AUTHORITIES. THE USER SHALL BE RESPONSIBLE FOR OBTAINING ALL NECESSARY PERMITS AND APPROVALS FROM THE APPLICABLE AGENCIES AND AUTHORITIES.

**WEST ELEMENTARY  
NAPOLEON AREA SCHOOL DISTRICT**  
700 CLAIRMONT AVENUE  
NAPOLEON, OHIO 43545

SITE PLAN

PROJECT: AB-42300

DRAWN BY: JH, SLB

CHECKED BY: KAB

SHEET

**C-1**

701-1/2 WEST FIRST STREET • DEFIANCE • OHIO • 43512 • PHONE • 419-782-6211 • architects@beilharz.com



1 SITE PLAN SCALE 1"=40'